

SA Rod end BEM06-60-501-DURBAL - BEM06-60-501-DURBAL

<https://www.123bearing.ie/bearing-housing/rod-end/sa/bem06-60-501-durbal>

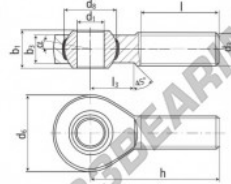
BEM06-60-501



male thread;
maintenance free,
adapter sizes
according to
DIN ISO 12240-4,
series K



**DURBAL® heavy-duty rod ends
with integral spherical
plain bearing in stainless steel**



rod end housing:
stainless steel 1.4301, rolled thread,
surface with pickling treatment

joint ball:
stainless steel, hardened and ground,
surface superfinished

race:
nylon / teflon / glass fibre compound

tolerances:
see page 10

order number		measurements [mm]					
type	right-hand thread left-hand thread	d ₁	d ₂				
BEM 06 -60	-501	6	M 6				
		d ₃	d ₄				
		20	12,65				
		h ₁	b ₃				
		9	6,75				
measurements [mm]		weight		basic load rating			
type	h	l	l ₃	α ₁ [°]	α ₂ [°]	dyn. C [N]	stat. C ₀ [N]
BEM 06	36	22	12	13,0	6,5	0,020	2820 4900

PRODUCT FEATURES

Brand	DURBAL
N° Ean13	3663952509693
Inside diameter	6 mm
Outside diameter	20 mm
Thickness	9 mm
Type	SA
Weight	20 g
Thread	Right-hand thread
Lubrication	without
Packaging	1

contact@123bearing.ie

+33 359 36 04 90

CRT4 de Lesquin 60 Rue Du Haut De Sainghin 59273 Fretin FRANCE