

SA Rod end POSL25-DURBAL - POSL25-DURBAL

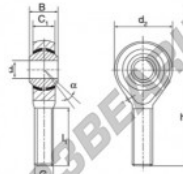
<https://www.123bearing.ie/bearing-housing/rod-end/sa/posl25-durbal>

POSL25



Description: DIN ISO rod end K series. Sliding combination steel / heavy duty bronze.

male thread:
maintenance free,
according to
DIN ISO 12240-4,
series K



rod end body:
surface zinc plated

Sliding combination:
steel / heavy duty bronze

inner ring:
bearing steel, hardened, ground and
spherical surface chromium plated

Outer ring:
heavy duty bronze with lubrication

Lubrication:
lubrication required

order number	measurement [mm]		measurement [mm]		
	right hand thread	left hand thread	B	C ₁	d ₁
POSL 25	25	M 24 x 2	31	22,00	60

type	measurement [mm]		α [°]	load rating C ₀ [kN]	weight [kg]
	l ₁ min	h			
POS / POSL 25	57	94	15	68,0	0,640

PRODUCT FEATURES

Brand	DURBAL
N° Ean13	3663952494784
Inside diameter	25 mm
Outside diameter	60 mm
Thickness	31 mm
Type	SA
Weight	640 g
Thread	Left-hand thread
Lubrication	without
Packaging	1

contact@123bearing.ie

+33 359 36 04 90

CRT4 de Lesquin 60 Rue Du Haut De Sainghin 59273 Fretin FRANCE